



WatchdogRBX

Remote Monitoring System

Web-Based Remote Monitoring System for Real-time Pressure & Flow Measurement, Reporting, & Alarming

The WatchdogRBX is a web-based, turn-key field solution for remote monitoring of pressure, flow, temperature, tank level, and other parameters critical to the operation of gas distribution systems and oil & gas well sites.

The WatchdogRBX is unique among web-based remote monitoring systems in that it delivers “**True Report by Exception**” data. Most operating parameters (e.g. pressure, temperature, etc.) change slowly over time, so the round-robin polling done by typical legacy systems is highly inefficient. The WatchdogRBX scans each sensor every 120 msec and only transmits data that has changed by a user-programmable increment. Thus, it captures transient conditions that may be missed between polls on other systems. Fielded WatchdogRBX systems have shown a 90%+ reduction in data transmission over comparable data acquisition systems, resulting in more efficient modem usage and lower cellular data transmission costs.

The web-based system eliminates expensive software, infrastructure, and systems integration costs. Critical data is delivered to your desktop or laptop when you need it via a low-cost monthly data subscription plan.

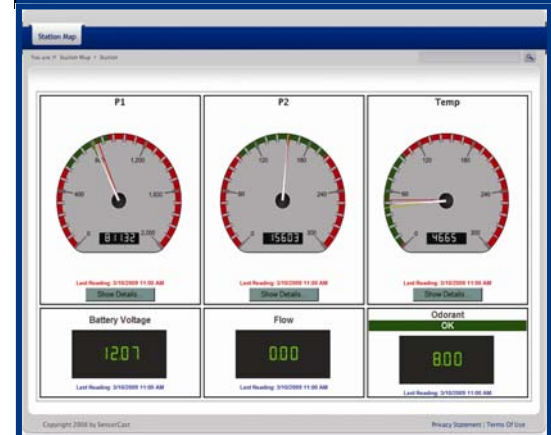


Applications

- Chart Recorder Replacement
- Regulator Station Pressure & Flow Monitoring
- City Gates Pressure & Flow Monitoring
- Low-cost Web-based Data Acquisition
- Well Site Tank Level and Flow Monitoring



Web-Based User Interface



WatchdogRBX is Ideal for:

- Pressure Monitoring
- Oil and Gas Pipelines
- Well Heads
- Tanks and Pump Stations



WatchdogRBX

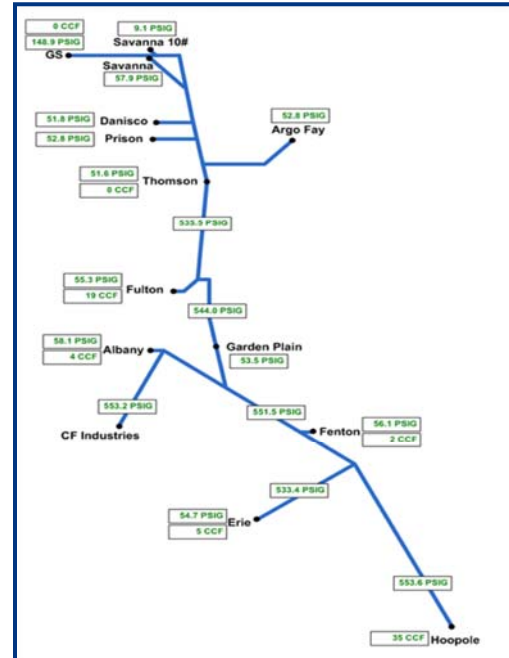
Remote Monitoring System

The WatchdogRBX system gives users highly secure web access to real-time system-wide data and alarming. Data is presented in easy to interpret gauges, graphical system maps, and plotted over selectable date ranges.

Real time alarms are sent to cell phone or emails.

WatchdogRBX Benefits

- Know the real-time operational status of your distribution system
- See regulator, compressor, and pump anomalies that wouldn't ordinarily be seen
- Real-time alarms
- Eliminate paper chart replacement
- Save on cellular data communications costs
- Significant reduction in communication timeouts associated with gathering field data



“We showed our WatchdogRBX System to the Missouri Public Service Commission. Not only did it meet their requirements; they said they’ve never seen anything like it before. It was easy to install and configure—no PC required!”

—Tom Burk,
Southern Missouri Natural Gas

WatchdogRBX Technical Specifications

Controller

Data Capacity	35 days
Analog Inputs	Up to 5 user-selectable 1-5V (15-bit) or 0-20mA plus over range (14-bit) 1
Digital I/O	Up to 8 user-selectable as dry contact inputs or open drain outputs; Up to 32 12/24V, 48V, 115/125V, 240V digital inputs; Up to 16 dry contact relay outputs
Counter Inputs	1, 1-10Hz (dry contact); 2, 0-10kHz (turbine or dry contact)
Sample Rate	120 milliseconds

Environmental

Environment	-22°F (-30°C) to +150°F (+65°C)
-------------	---------------------------------

Communications

Technology	GSM/GPRS, Satellite, or Data Radio
------------	------------------------------------

Power

Solar System	Solar System (solar panel, AGM deep-cycle battery, & charge controller) normally provided Panel Size and Battery are typically sized by site location and desired # days without sun
--------------	---

Installation

Mounting	Wall-mount or pipe-mount
----------	--------------------------

www.watchdogcp.com